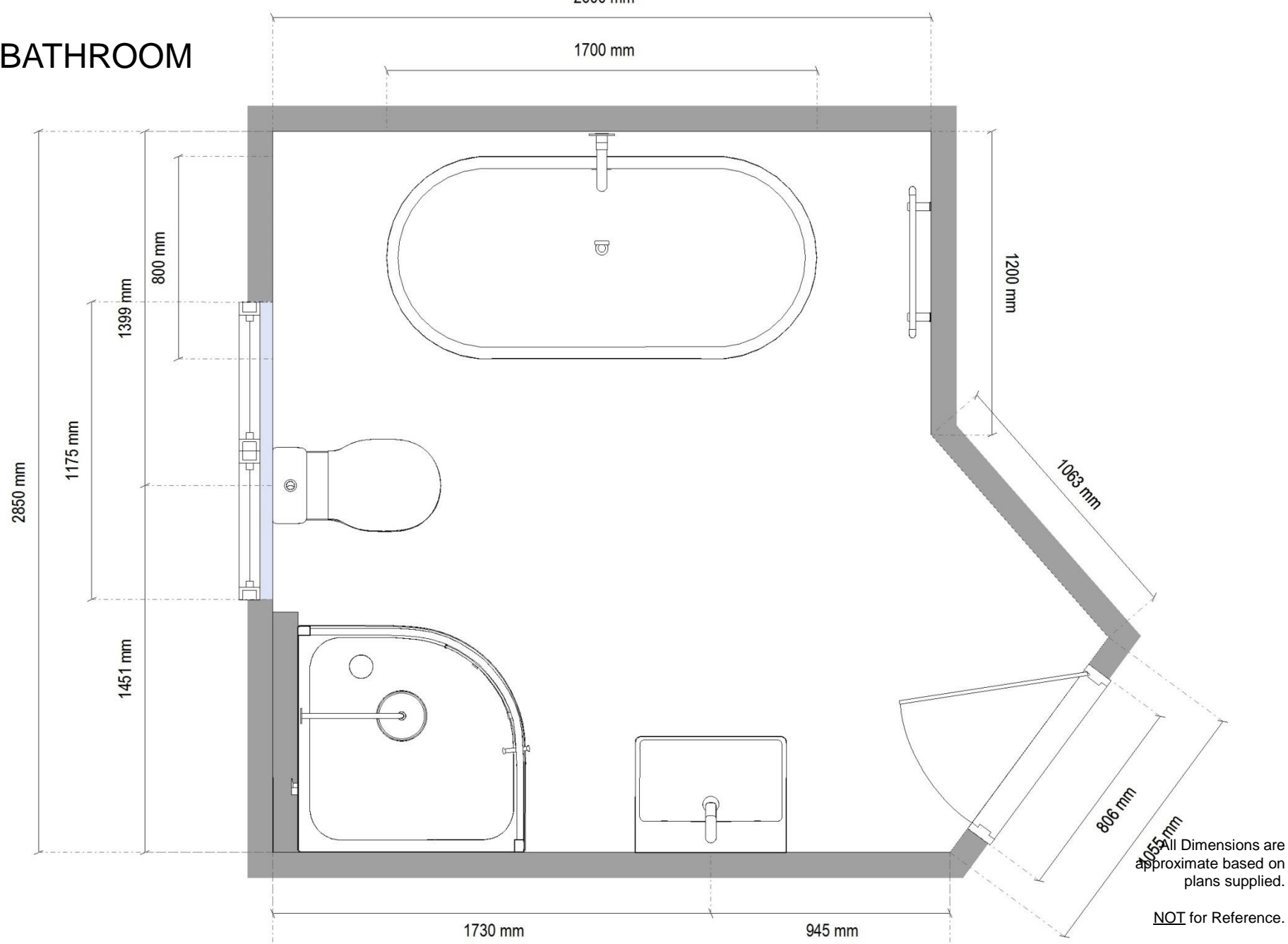


# WE LOVE A PLAN!

WE WOULD LIKE TO SHOW YOU HOW  
YOUR NEW BATHROOM COULD LOOK



# BATHROOM



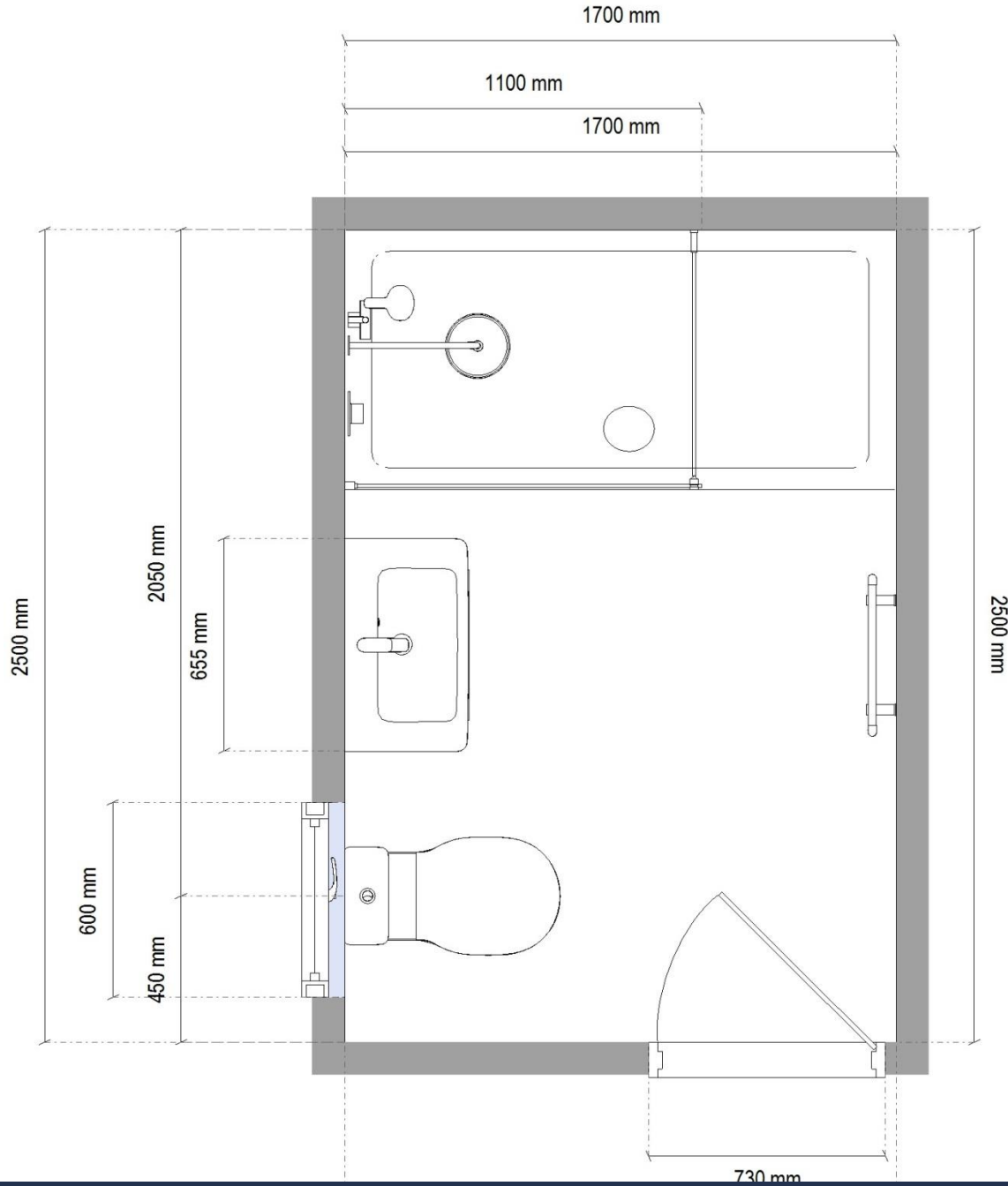








# EN-SUITE



All Dimensions are approximate based on plans supplied.

NOT for Reference.





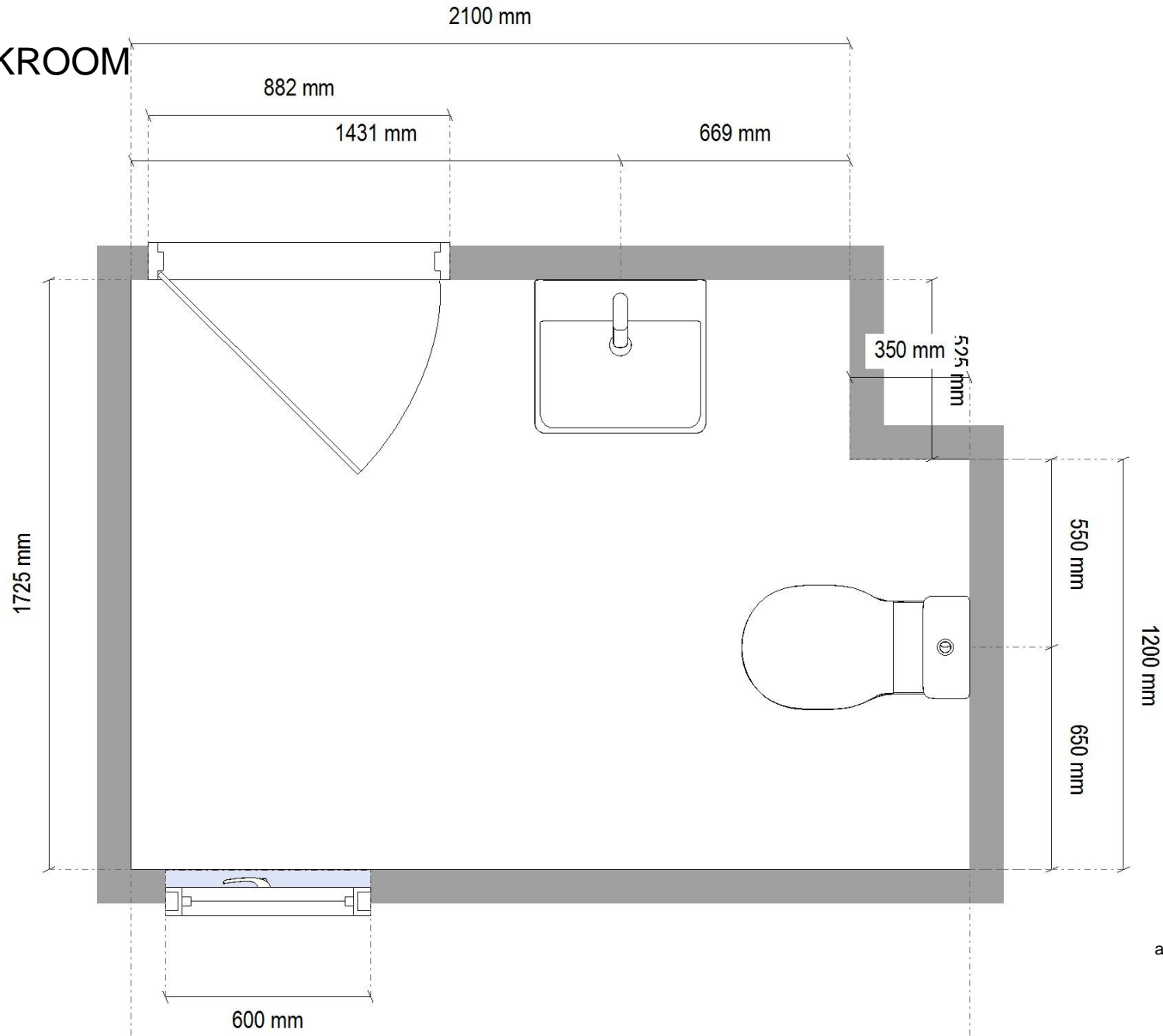






LET'S TALK ABOUT MAKING IT HAPPEN

# CLOAKROOM



All Dimensions are approximate based on plans supplied.

NOT for Reference.









#### **BELFAST**

Great Patrick Street  
Belfast, BT1 2NX  
(inc. Commercial Division)

**TEL:** 028 9023 5791

#### **BALLYMENA**

Pennybridge  
Ballymena, BT42 3HB

**TEL:** 028 2564 5121

#### **NEWTOWNARDS**

Glenford Way  
Newtownards, BT23 4BX

**TEL:** 028 9182 6680

#### **MAGHERA**

42 Tobermore Road  
Maghera, BT46 5DR

**TEL:** 028 7964 5599

#### **PORTADOWN**

58-62 Armagh Road  
Portadown, BT62 3DS

**TEL:** 028 3839 2000

#### **LISBURN**

Lissue Industrial estate  
Moira Road, BT28 2RF

**TEL:** 028 9262 1133

[www.beggsandpartners.com](http://www.beggsandpartners.com)

**DIRECTORS:** N.W. Beggs, B.J. Beggs, I.M. Beggs, N.J. Beggs, G. Meldrum FCA, R. Robinson. Beggs & Partners Company **Reg. No. NI 04593**, Beggs & Partners (Ballymena) Company **Reg. No. NI 10939**