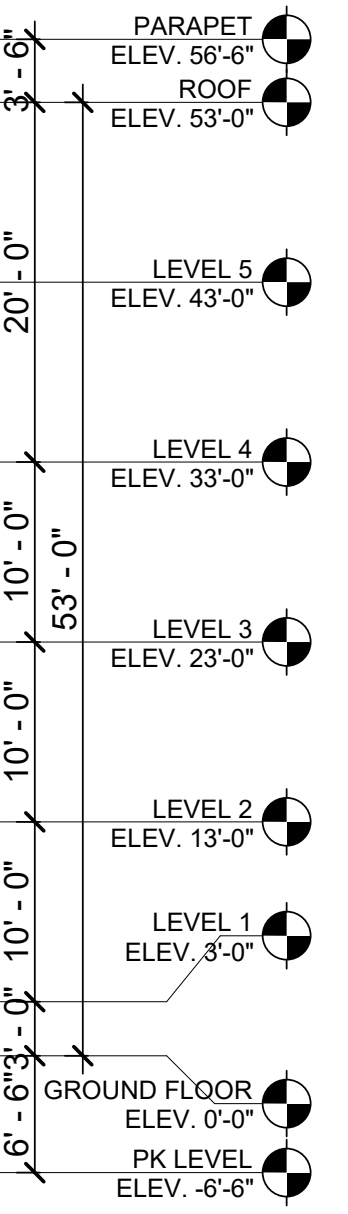




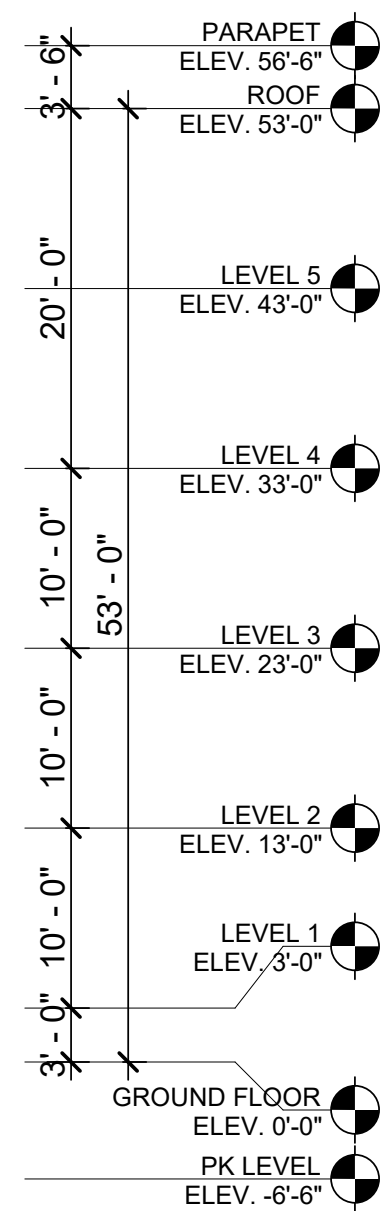
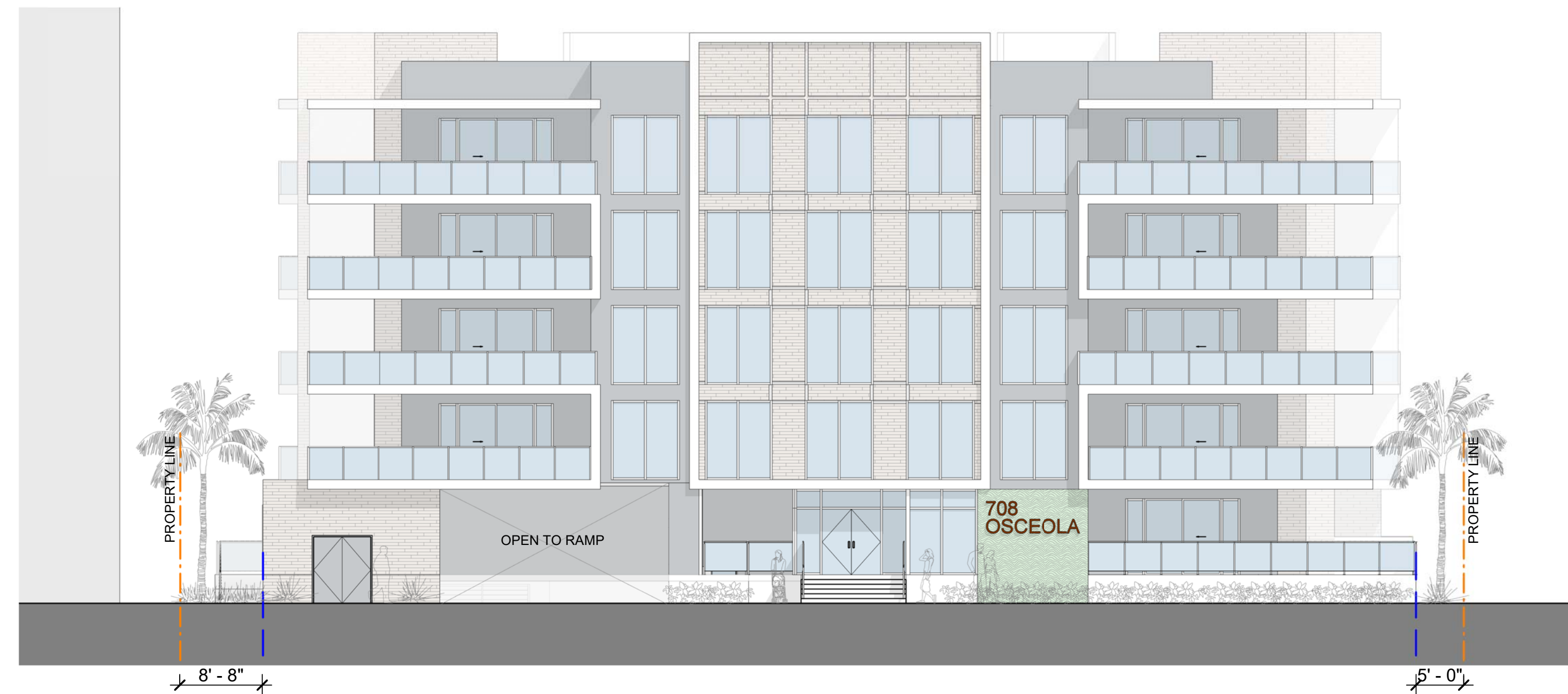
NORTH ELEVATION
SCALE: 3/32" = 1'-0"



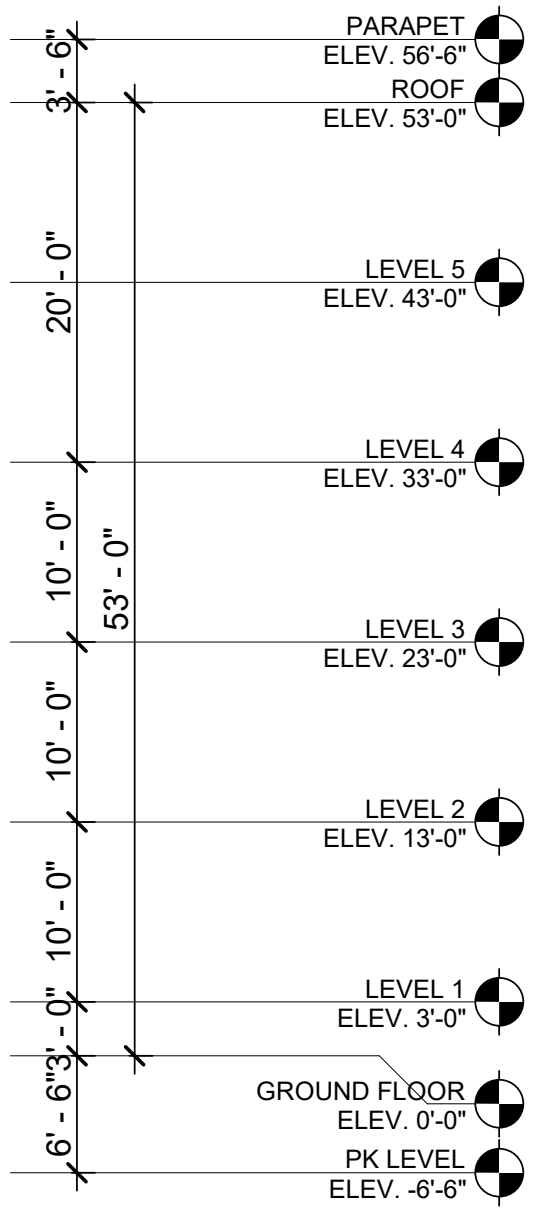
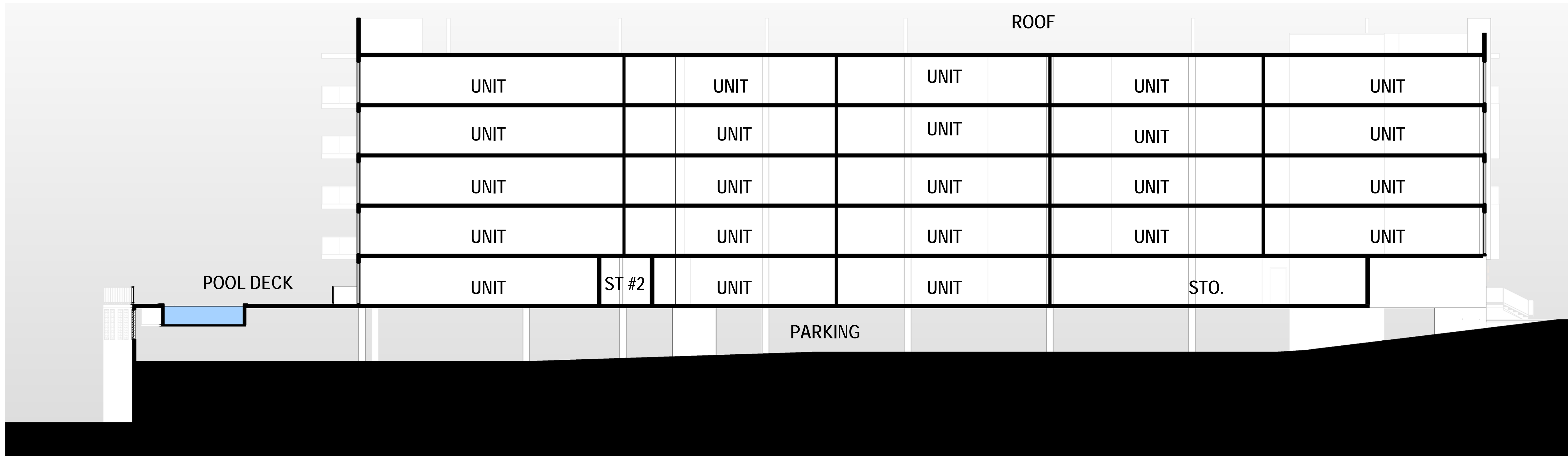
EAST ELEVATION
SCALE: 3/32" = 1'-0"



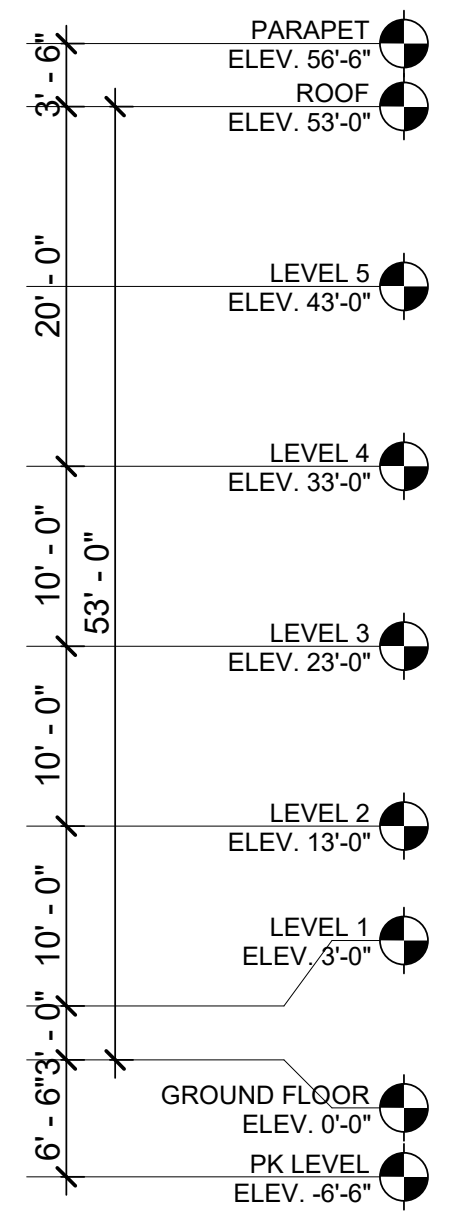
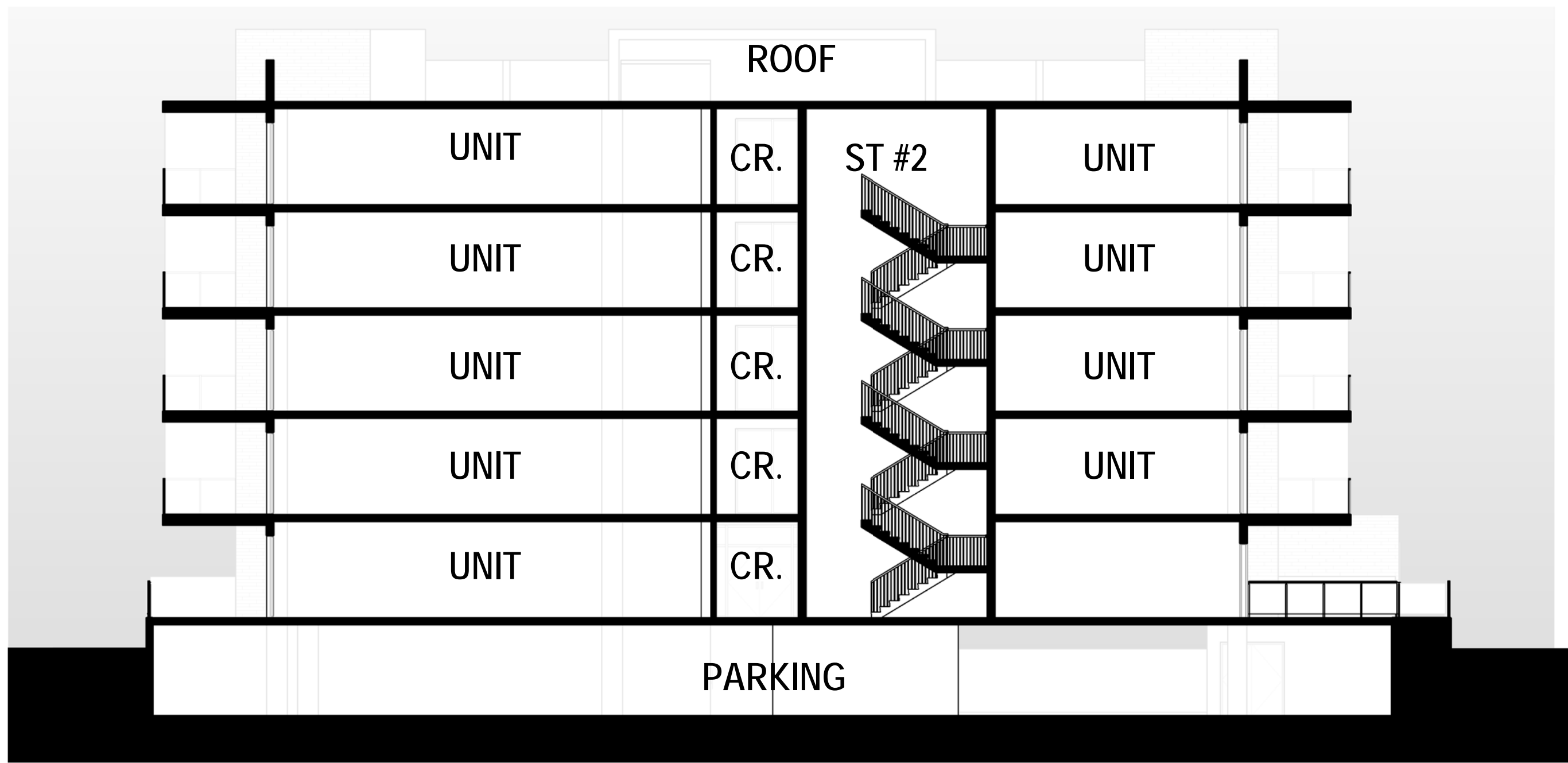
SOUTH ELEVATION
SCALE: 3/32" = 1'-0"



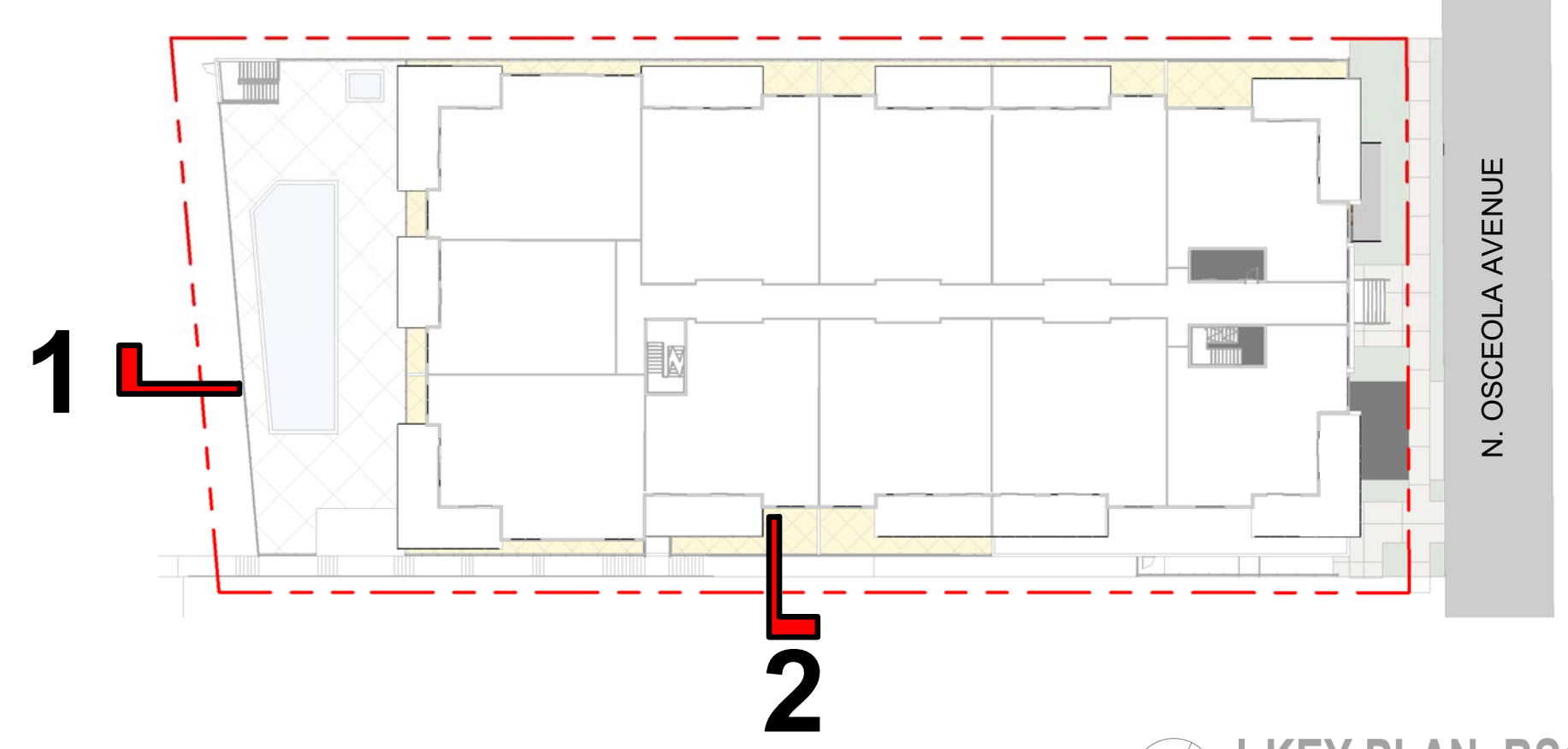
WEST ELEVATION
SCALE: 3/32" = 1'-0"



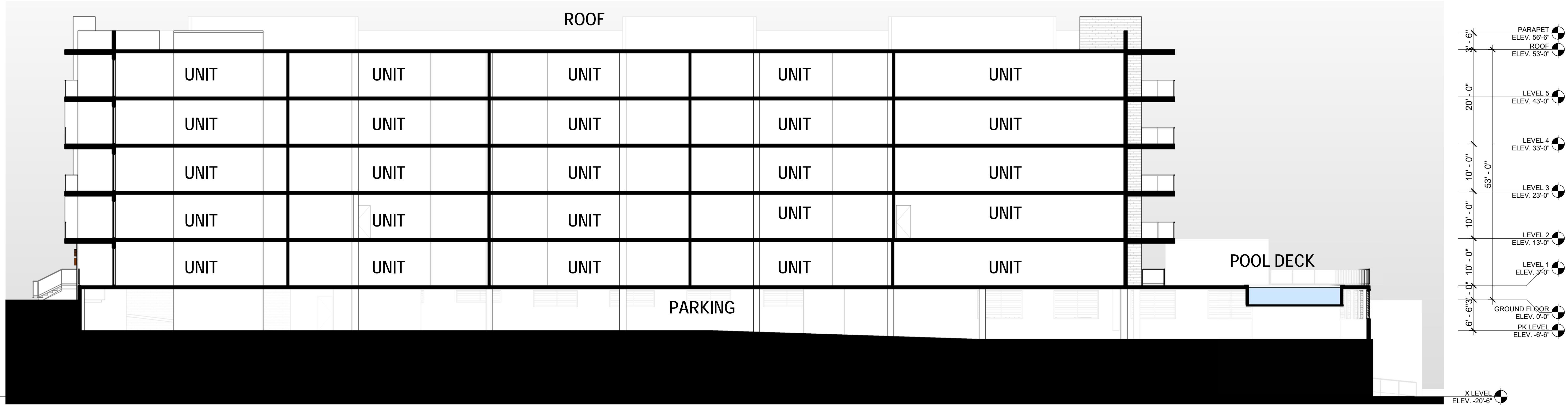
1 | BUILDING SECTION
SCALE: 3/32" = 1'-0"



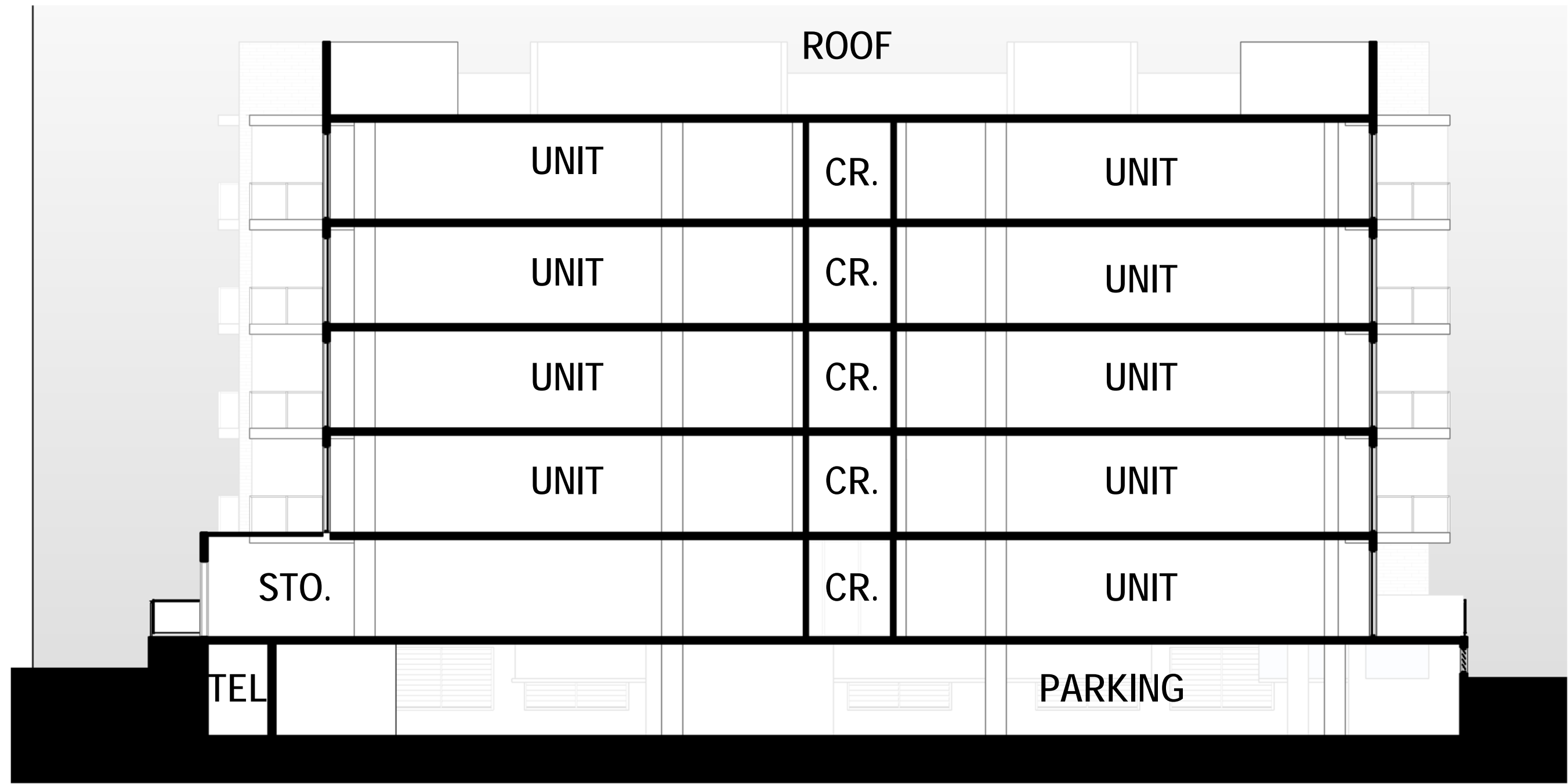
2 | BUILDING SECTION
SCALE: 3/32" = 1'-0"



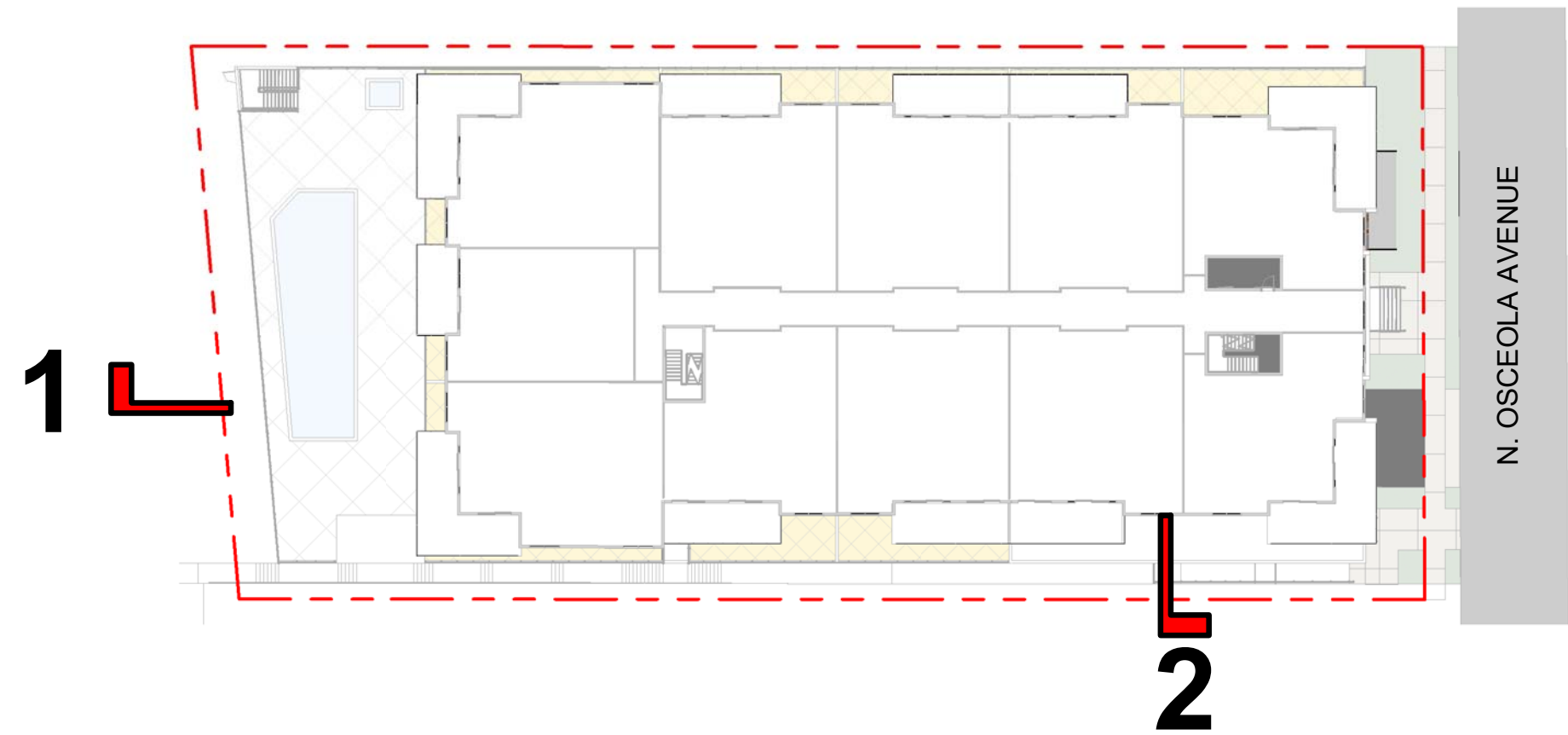
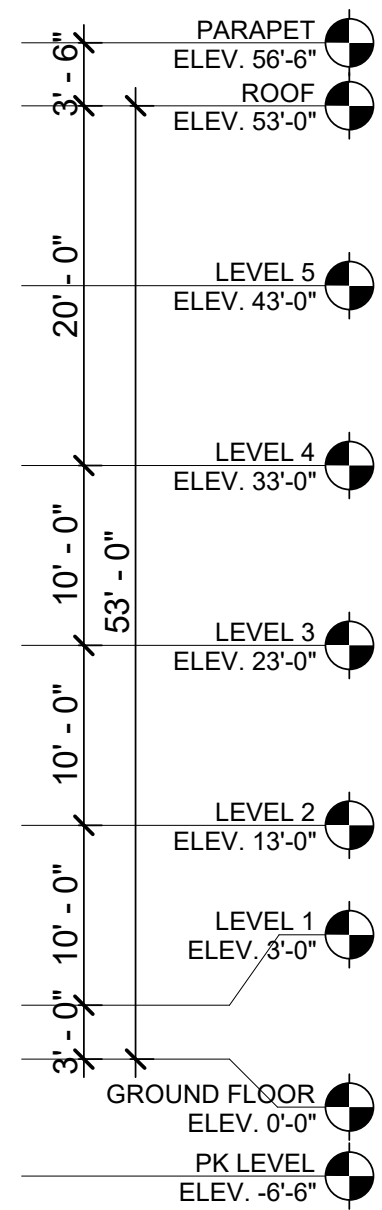
KEY PLAN_BS1
SCALE: 1" = 40'-0"



1 | BUILDING SECTION
SCALE: 3/32" = 1'-0"



2 | BUILDING SECTION
SCALE: 3/32" = 1'-0"



KEY PLAN_BS2
SCALE: 1" = 40'-0"











